

## truSculpt® iD Results



## Technical Specifications

Technology	Monopolar Radio Frequency (RF)
Frequency	1 MHz / 2 MHz
Maximum Power	150 W / 300 W
Treatment Area	16 cm <sup>2</sup> / Up to 300 cm <sup>2</sup>
Console Dimensions	14"W x 17.5"L x 41.5"H
Console Weight	86 lbs
Console Electrical	Voltage: 100 VAC-240 VAC 50/60 Hz Power: 2000 VA



### About Cutera

Cutera is a leading provider of laser and other energy-based aesthetic systems for practitioners worldwide. Since 1998, Cutera has been developing innovative, easy-to-use products that enable physicians and other qualified practitioners to offer safe and effective aesthetic treatments to their patients.

FDA cleared indications for use: The 2 MHz setting for the 40 cm<sup>2</sup> handpiece is indicated for reduction in circumference of the abdomen and non-invasive lipolysis (breakdown of fat) of the abdomen. The truSculpt massage device is intended to provide a temporary reduction in the appearance of cellulite.



Cutera, Inc. World Headquarters  
3240 Bayshore Boulevard, Brisbane, California 94005 USA  
888-4-CUTERA or 415-657-5500 | info@cutera.com | cutera.com

<sup>1</sup> Amy Taub Study ASDS 2017 Poster. <sup>2</sup> WalFRE Franco, PhD, Amogh Kothare, MS, and David J. Goldberg, MD. Controlled Volumetric Heating of Adipose Tissue Using a Novel Radiofrequency Technology. Lasers in Surgery and Medicine 41:745-750 (2009). <sup>3</sup> WalFRE Franco, PhD, Amogh Kothare, MS, Stephen J. Ronan, MD, FACS, Roy C. Grekin, MD, Timothy H. McCalmont, MD. Hyperthermic Injury to Adipocyte Cells by Selective Heating of Subcutaneous Fat with a Novel Radiofrequency Device: Feasibility Studies. Lasers in Surgery and Medicine 42:361-370 (2010). <sup>4</sup> Cosmetic Surgery National Data Bank Statistics 2017 by The American Society for Aesthetic Plastic Surgery. <sup>5</sup> Energy-Based Body Shaping & Skin Tightening (July 2017) Report by Medical Insight, Inc. <sup>6</sup> Cutera Consumer Research Study. Data on file.

©2020 Cutera, Inc. All rights reserved. Model; Not actual patient. AP1890 rE (3/20)

truSculpt® iD

Personalized  
Body Sculpting:  
The Next Evolution



# truSculpt® iD

## Innovation Unlike Anything Else

truSculpt® iD is a personalized body sculpting technology – providing you with the perfect solution to enter the fastest growing market segment and revolutionize your practice.

This powerful, non-invasive, Monopolar RF platform tailors to patients’ individual needs and features truControl™ for clinically proven results, safety, and a comfortable patient experience. truSculpt® iD treats the entire fat layer, resulting in an average 24% permanent fat thickness reduction<sup>1</sup>. It offers unique handpiece and placement location versatility and customized 15-minute protocols to treat large or multiple body areas simultaneously with an incredible ROI.

- |  |  |  |   |
|--|--|--|---|
| <p><b>Proven Results</b></p> <ul style="list-style-type: none"> <li>• Eliminate an average of 24% fat in one treatment</li> <li>• Clinically proven for permanent fat cell destruction</li> <li>• Achieve consistent results with truControl technology</li> </ul> | <p><b>Customizable</b></p> <ul style="list-style-type: none"> <li>• Treat multiple body areas at once</li> <li>• Achieve specific patient goals</li> <li>• Treat all body types and non-pinchable fat</li> </ul> | <p><b>Optimal Experience</b></p> <ul style="list-style-type: none"> <li>• 15-minute treatment protocol</li> <li>• Hands-free and hand-held handpieces for flexibility</li> <li>• Ultimate patient comfort during treatment with no downtime</li> </ul> | <p><b>Fast Return on Investment</b></p> <ul style="list-style-type: none"> <li>• Fast-growing market segment</li> <li>• Fast treatment time</li> <li>• High patient satisfaction</li> </ul> |
|--|--|--|---|

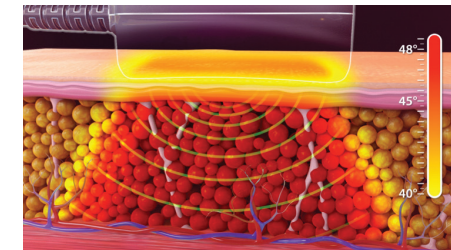


## Powerful Technology

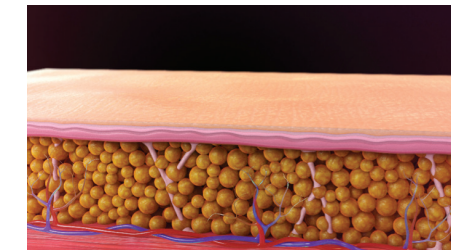
truSculpt® iD provides an innovative RF technology that delivers clinically proven results to expand your body sculpting business.



**2 MHz Monopolar RF:**  
Cutera’s proprietary, low frequency and uniform delivery technology penetrates deep to treat the entire fat layer from skin to muscle.



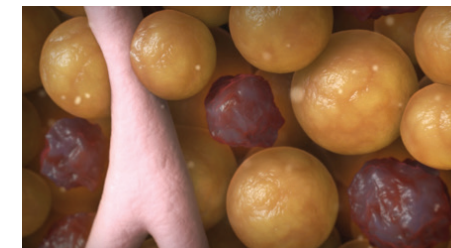
**truControl Technology:**  
Skin temperature is continuously monitored and energy delivery is automatically adjusted to reach and hold a therapeutic temperature of >45°C in the fat, while maintaining a skin temperature of 3-4°C cooler<sup>2,3</sup>.



**12 Weeks After One Treatment:**  
Average of 24% fat reduction<sup>1</sup>.



**Fat-Heat Selectivity:**  
Optimized energy delivery and heating enhances selective apoptosis of the subcutaneous adipose tissue.



An average of 24% fat cells are irreversibly damaged.



Fat cells are slowly removed and excreted through the body naturally over a 12-week process.

## Everyone Has Their Own Body iD

### Meet the Demand

- Nonsurgical fat reduction was the top nonsurgical and noninvasive procedure in 2017<sup>4</sup>.
- Nonsurgical fat reduction procedures increased 24.7% in 2017<sup>4</sup>.
- The body shaping & skin tightening market is expected to expand by 14.5% year over year<sup>5</sup>.

In a survey of 500 consumers, those who have had body sculpting procedures were most often treated on the abdomen, arms, and legs<sup>6</sup>. truSculpt® iD allows you to tap into these high-demand procedures and grow your practice.

### Sculpting With Open Arms

truSculpt® iD offers a unique and personalized approach to improve upper arm contouring and definition. Unlike other devices, there is no placement limitation, it is easy to set up, and fast to treat. Provide your patients improved freedom to open their arms and wear sleeveless shirts with confidence.

- Unique approach to treat skin with laxity
- Sculpt challenging areas
- Treat multiple areas on both arms simultaneously
- No downtime

### Sculpting To Get a Leg Up

Thighs are commonly out of proportion with the rest of the lower body causing growing interest in leg sculpting. truSculpt® iD offers an individualized and unmatched solution to regain proportion to outer and inner thighs of all shapes and sizes. Give your patients a leg up and the desire to flaunt their youthful shape.

- Versatile to treat various tissue densities
- Tailored for areas large and small
- Flexible treatment configurations
- Immediately resume normal activities



#gonorthmedical\_derma



[www.derma.gonorthmedical.com](http://www.derma.gonorthmedical.com)

[info@gonorthmedical.com](mailto:info@gonorthmedical.com)

SWEDEN - NORWAY - DENMARK - ISLAND